

PharmaBlock

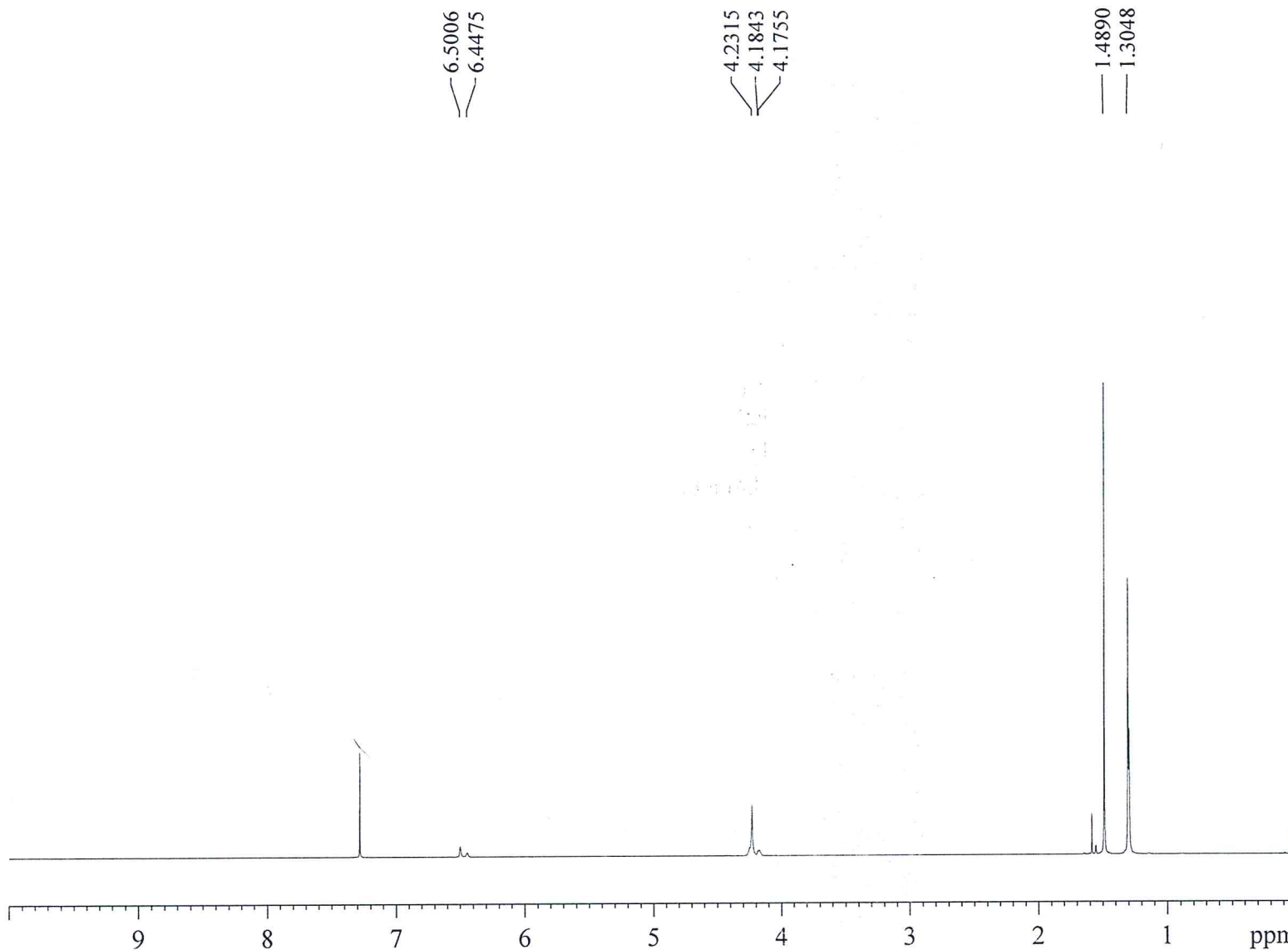
PB07129

Current Data Parameters
 NAME PB0001616-125-01
 EXPNO 1
 PROCNO 1

F2 - Acquisition Parameters
 Date_ 20161209
 Time 16.40
 INSTRUM spect
 PROBHD 5 mm PABBO BB/
 PULPROG zg30
 TD 65536
 SOLVENT CDCl3
 NS 16
 DS 2
 SWH 8012.820 Hz
 FIDRES 0.122266 Hz
 AQ 4.0894966 sec
 RG 195.19
 DW 62.400 usec
 DE 6.50 usec
 TE 298.5 K
 D1 1.00000000 sec
 TD0 1

===== CHANNEL f1 =====
 SFO1 400.1324710 MHz
 NUC1 1H
 P1 10.58 usec
 PLW1 26.00000000 W

F2 - Processing parameters
 SI 65536
 SF 400.1300000 MHz
 WDW EM
 SSB 0
 LB 0.30 Hz
 GB 0
 PC 1.00



6.5006
6.4475

4.2315
4.1843
4.1755

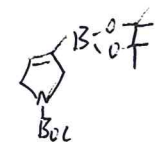
1.4890
1.3048

1.0864

4.1093

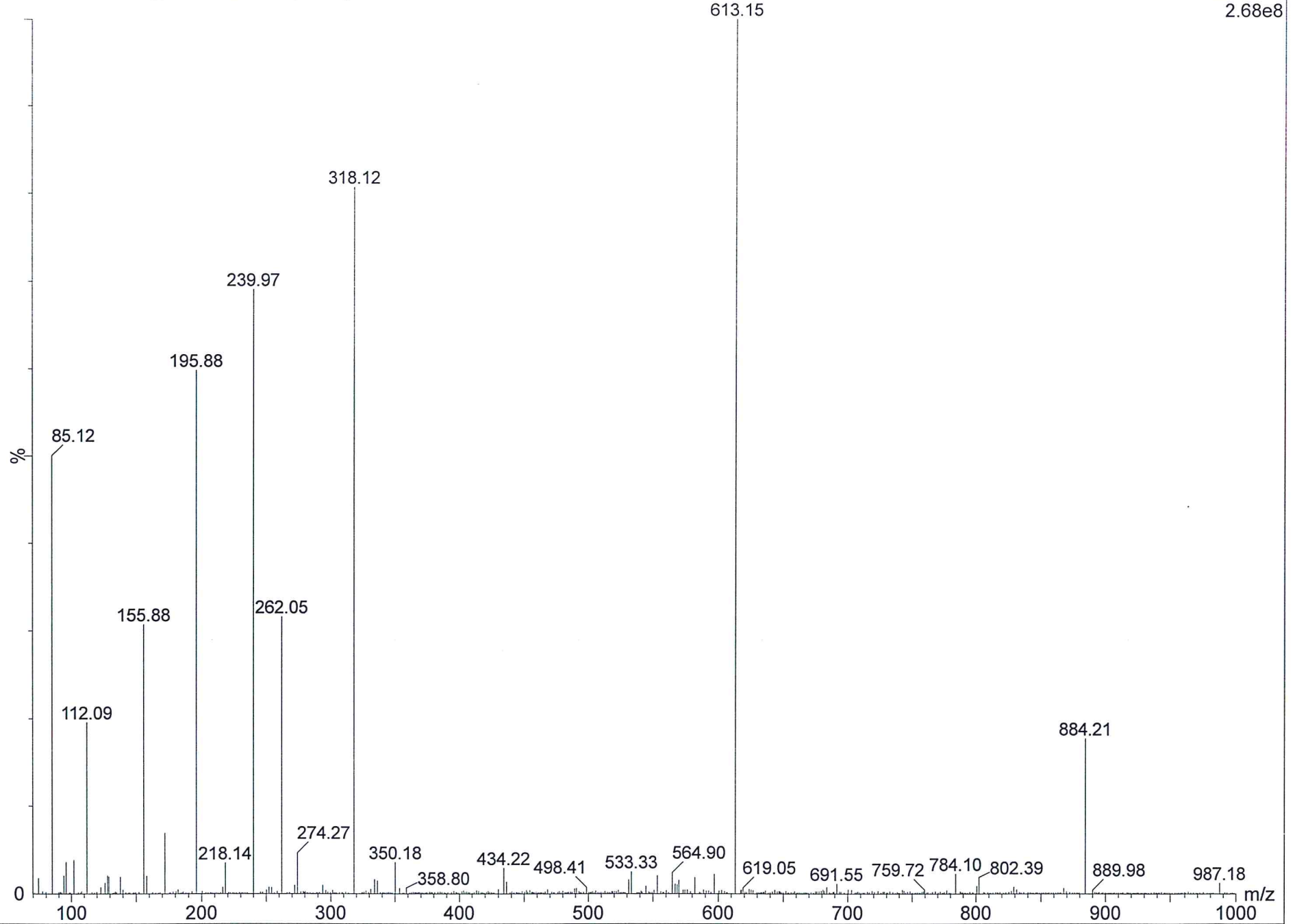
8.9887
12.0000

Confidential



PB0001616-125-01_09135105 287 (1.823)

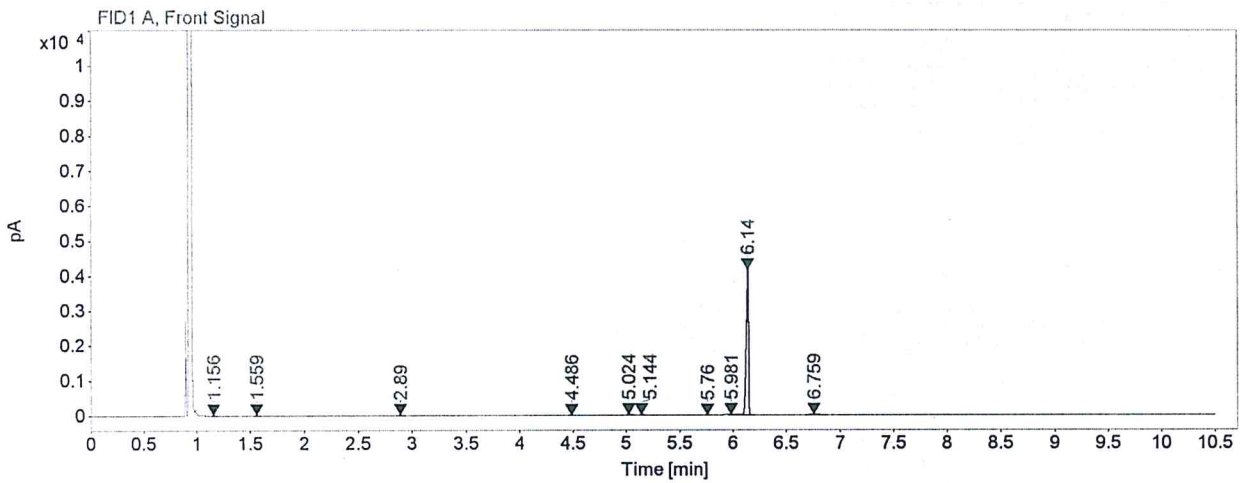
1: Scan ES+
2.68e8



Area Percent Report

PharmaBlock

Data file: D:\data\2016-12\20161202 2016-12-09 13-16-28\206B0101.D
 Sample name: PB0001616-125-01
 Instrument: GC-02 Location: 206
 Injection date: 12/9/2016 1:19:10 PM Injection: 1 of 1
 Acq. method: GERENAL-12MIN HP-5.M Injection volume: 1.000
 Analysis method: GERENAL-12MIN HP-5.M Acq. operator: 系统
 Last changed: 12/9/2016 1:41:31 PM



Signal: FID1 A, Front Signal

RT [min]	Type	Width [min]	Area	Height	Area%	Name
1.156	BB	0.0156	3.3021	3.0562	0.0535	
1.559	BB	0.0210	5.0882	3.7098	0.0825	
2.890	BB	0.0222	5.1854	3.7275	0.0840	
4.486	BB	0.0187	2.1082	1.7960	0.0342	
5.024	BB	0.0272	15.6951	8.6184	0.2543	
5.144	BB	0.0176	14.9126	12.7818	0.2416	
5.760	BB	0.0163	1.3578	1.2839	0.0220	
5.981	BB	0.0277	19.2280	9.8687	0.3116	
6.140	BB S	0.0217	6079.3716	4251.6875	98.5124	
6.759	BB	0.0650	24.9274	5.1940	0.4039	
	Sum		6171.1762			