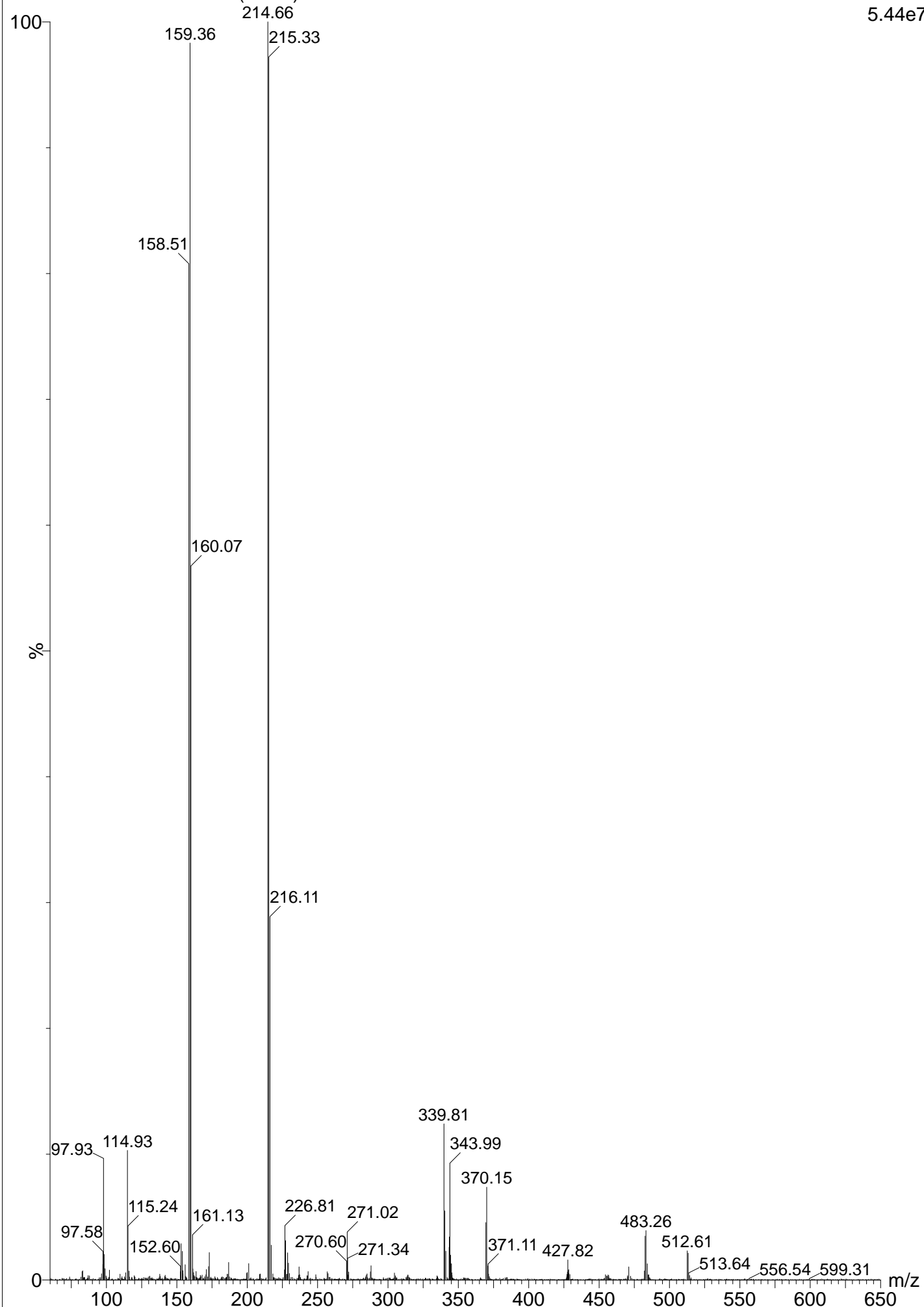


Current Data Parameters
 NAME PBZS2069-648-251-01
 EXPNO 1
 PROCNO 1

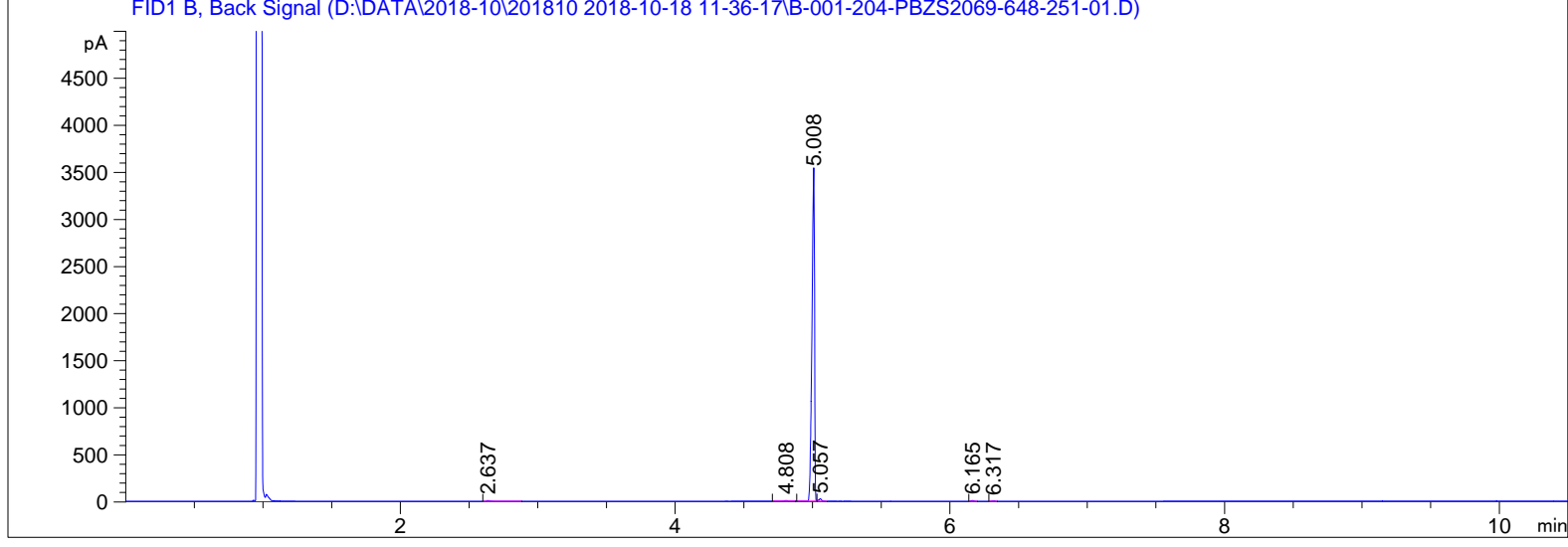
F2 - Acquisition Parameters
 Date_ 20181017
 Time 21.05 h
 INSTRUM spect
 PROBHD Z116098_0658 (
 PULPROG zg30
 TD 65536
 SOLVENT D2O
 NS 16
 DS 2
 SWH 8012.820 Hz
 FIDRES 0.244532 Hz
 AQ 4.0894465 sec
 RG 59.37
 DW 62.400 usec
 DE 6.50 usec
 TE 297.4 K
 D1 1.00000000 sec
 TD0 1
 SFO1 400.1324708 MHz
 NUC1 1H
 P1 9.88 usec
 PLW1 17.23500061 W

F2 - Processing parameters
 SI 65536
 SF 400.1300000 MHz
 WDW EM
 SSB 0
 LB 0.30 Hz
 GB 0
 PC 1.00



```

=====
Acq. Operator   : R&D                               Seq. Line :    1
Acq. Instrument : GC-06-01                           Location  :   204 (B)
Injection Date  : 10/18/2018 11:37:53 AM             Inj       :    1
                                                    Inj Volume: 1 µl
Method          : D:\DATA\2018-10\201810 2018-10-18 11-36-17\General 12 min HP-5.M (Sequence
                :                               Method)
Last changed    : 10/18/2018 11:36:17 AM by R&D
Additional Info : Peak(s) manually integrated
  
```



=====
 Area Percent Report
 =====

```

Sorted By      :      Signal
Multiplier     :      1.0000
Dilution      :      1.0000
Do not use Multiplier & Dilution Factor with ISTDs
  
```

Signal 1: FID1 B, Back Signal

Peak #	RetTime [min]	Type	Width [min]	Area [pA*s]	Height [pA]	Area %
1	2.637	BB	0.0239	12.04106	7.07075	0.25668
2	4.808	BB	0.0257	11.02569	5.92275	0.23504
3	5.008	BV	0.0204	4620.45361	3490.52026	98.49626
4	5.057	VB	0.0215	34.99937	24.76282	0.74610
5	6.165	BB	0.0184	8.10229	7.07558	0.17272
6	6.317	BB	0.0190	4.37173	3.64366	0.09319

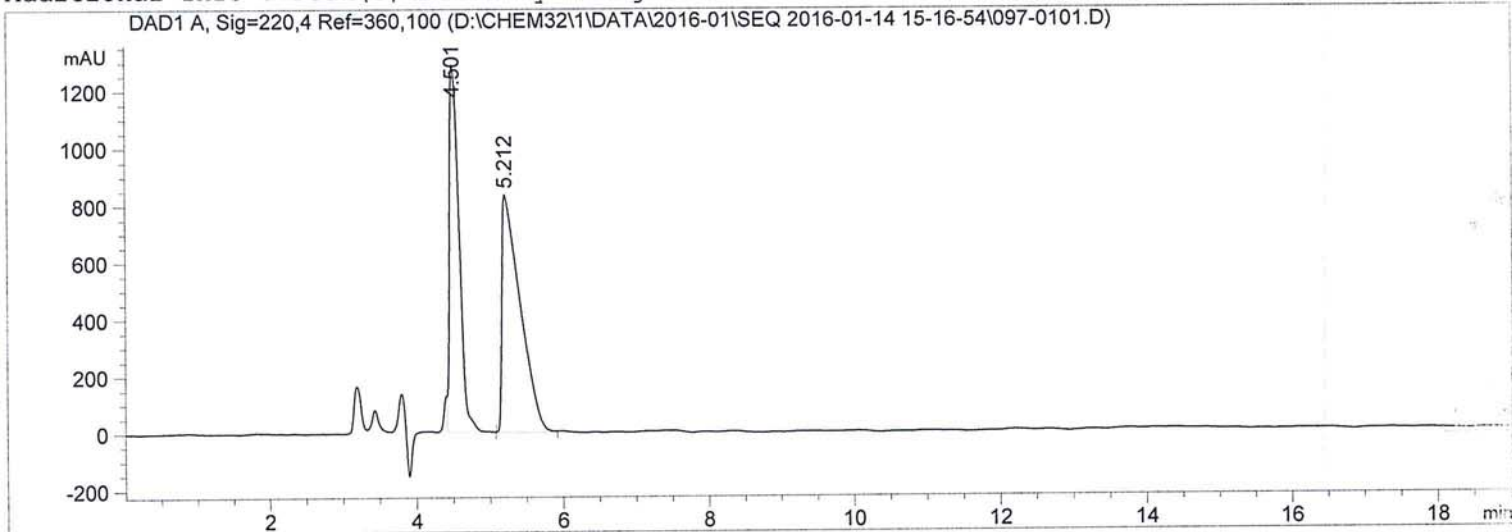
Totals : 4690.99375 3538.99583

=====
 *** End of Report ***

=====

Acq. Operator	: SYSTEM	Seq. Line	: 1
Acq. Instrument	: LC1260	Location	: Vial 97
Injection Date	: 1/14/2016 3:18:22 PM	Inj	: 1
		Inj Volume	: 10.000 µl
Acq. Method	: D:\CHEM32\1\DATA\2016-01\SEQ 2016-01-14 15-16-54\C(10)+D(90)-2.M		
Last changed	: 1/14/2016 3:16:54 PM by SYSTEM		
Analysis Method	: D:\CHEM32\1\DATA\2016-01\SEQ 2016-01-14 15-16-54\C(10)+D(90)-2.M (Sequence Method)		
Last changed	: 1/14/2016 6:57:55 PM by SYSTEM (modified after loading)		
Method Info	: wash column		

Additional Info : Peak(s) manually integrated



=====
Area Percent Report
=====

Sorted By : Signal
Multiplier : 1.0000
Dilution : 1.0000
Do not use Multiplier & Dilution Factor with ISTDs

Signal 1: DAD1 A, Sig=220,4 Ref=360,100

Peak #	RetTime [min]	Type	Width [min]	Area [mAU*s]	Height [mAU]	Area %
1	4.501	VB	0.1485	1.17758e4	1289.43042	44.9958
2	5.212	BV	0.2573	1.43951e4	834.33014	55.0042

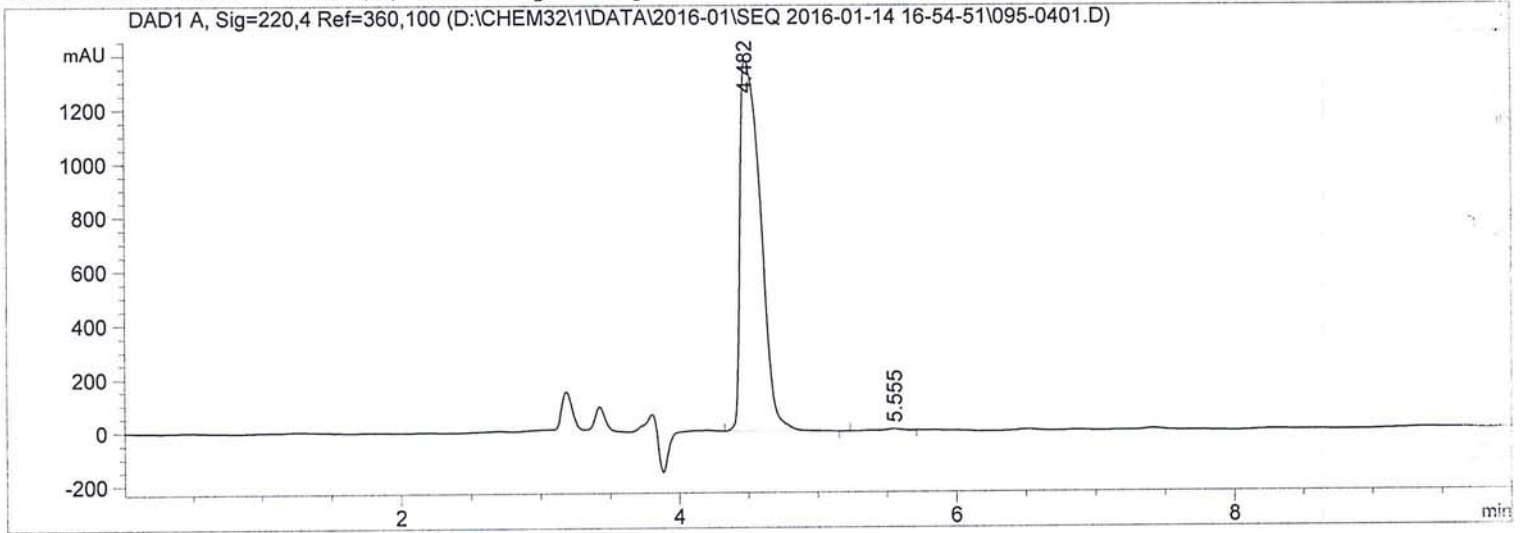
Totals : 2.61709e4 2123.76056

=====
*** End of Report ***

```

=====
Acq. Operator   : SYSTEM                               Seq. Line :    4
Acq. Instrument : LC1260                               Location  : Vial 95
Injection Date  : 1/14/2016 5:29:37 PM                Inj       :    1
                                                    Inj Volume: 10.000 µl
Different Inj Volume from Sequence !  Actual Inj Volume : 5.000 µl
Acq. Method    : D:\CHEM32\1\DATA\2016-01\SEQ 2016-01-14 16-54-51\C(10)+D(90)-2.M
Last changed   : 1/14/2016 4:54:51 PM by SYSTEM
Analysis Method : D:\CHEM32\1\DATA\2016-01\SEQ 2016-01-14 16-54-51\C(10)+D(90)-2.M (Sequence
Method)
Last changed   : 1/14/2016 7:03:23 PM by SYSTEM
                (modified after loading)
Method Info    : wash column
  
```

Additional Info : Peak(s) manually integrated



=====
 Area Percent Report
 =====

```

Sorted By      :      Signal
Multiplier     :      1.0000
Dilution       :      1.0000
Do not use Multiplier & Dilution Factor with ISTDs
  
```

Signal 1: DAD1 A, Sig=220,4 Ref=360,100

Peak #	RetTime [min]	Type	Width [min]	Area [mAU*s]	Height [mAU]	Area %
1	4.482	BB	0.1691	1.40681e4	1377.54004	99.2279
2	5.555	BV	0.1817	109.46362	8.31081	0.7721

Totals : 1.41775e4 1385.85085

=====
 *** End of Report ***