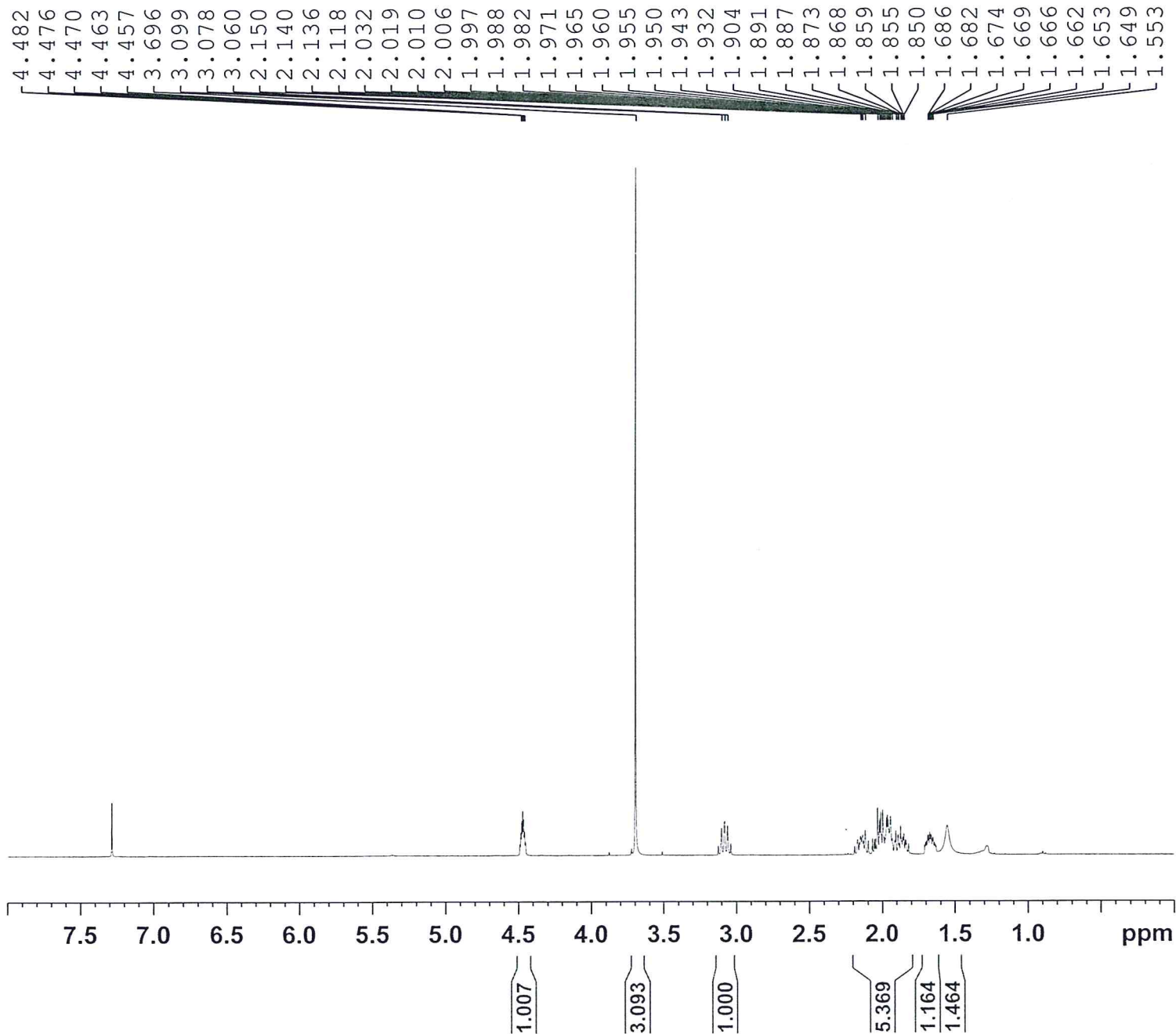


GROUP 10-SynthesisGroup



PharmaBlock

Current Data Parameters
NAME PB0000664-216-01
EXPNO 1
PROCNO 1

F2 - Acquisition Parameters
Date_ 20150821
Time 18.05
INSTRUM spect
PROBHD 5 mm PABBO BB/
PULPROG zg30
TD 65536
SOLVENT CDCl3
NS 16
DS 2
SWH 8012.820 Hz
FIDRES 0.122266 Hz
AQ 4.0894465 sec
RG 112.29
DW 62.400 usec
DE 6.50 usec
TE 300.0 K
D1 1.0000000 sec
TD0 1

==== CHANNEL f1 =====
SFO1 400.1324710 MHz
NUC1 1H
P1 10.00 usec
PLW1 16.98200035 W

F2 - Processing parameters
SI 65536
SF 400.1300000 MHz
WDW EM
SSB 0
LB 0.30 Hz
GB 0
PC 1.00

PH-7888



=====
Acq. Operator : 系统
Acq. Instrument : GC7820
Injection Date : 8/21/2015 7:09:18 PM

Seq. Line : 39
Location : 129
Inj : 1

Inj Volume : 1 µl

Different Inj Volume from Sample Entry! Actual Inj Volume : 1.5 µl

Acq. Method : C:\Chem32\1\Data\2015-08\def_GC.S1 2015-08-21 08-45-49\GENERAL (RUN 12 MIN)
.M

Last changed : 8/21/2015 7:05:34 PM by 系统

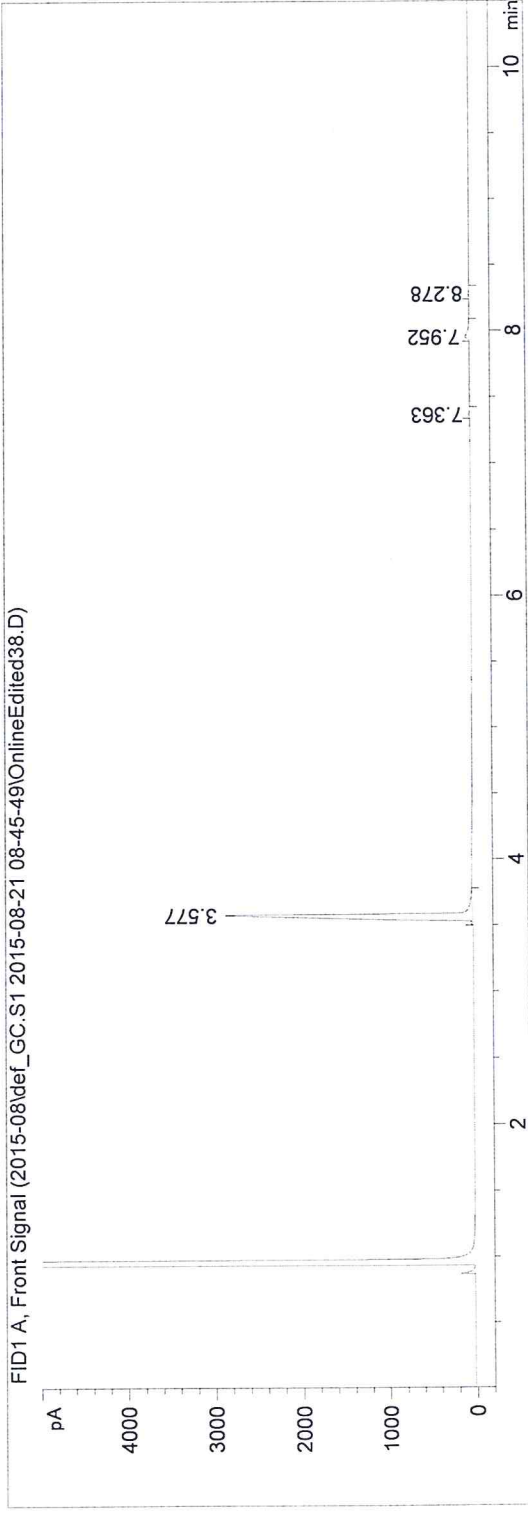
(modified after loading)

Analysis Method : C:\Chem32\1\Data\2015-08\def_GC.S1 2015-08-21 08-45-49\GENERAL (RUN 12 MIN)

.M (Sequence Method)

Last changed : 8/21/2015 7:30:58 PM by 系统

(modified after loading)



=====
Area Percent Report
=====

Sorted By : Signal
Multiplier : 1.0000
Dilution : 1.0000
Do not use Multiplier & Dilution Factor with ISTDs

Signal 1: FID1 A, Front Signal

Peak #	RetTime [min]	Type	Width [min]	Area [pA*s]	Height [pA]	Area %
1	3.577	BB	0.0311	6178.57520	2874.23315	97.10218
2	7.363	BB	0.0285	22.24136	11.02253	0.34954
3	7.952	BB	0.0455	150.55377	45.57227	2.36610
4	8.278	BB	0.0329	11.59184	5.42927	0.18218

Totals : 6362.96216 2936.25722

=====
*** End of Report ***
=====

PB0000664-216-01_21200153 151 (1.053)

1: Scan ES+
1.08e8

